

141 Stony Circle, Suite 210
Santa Rosa, CA 95401
www.capsonoma.org

Our Promise

Community Action changes people's lives, embodies the spirit of hope, improves communities, and makes America a better place to live. We care about the entire community and we are dedicated to helping people help themselves and each other.

**Thank you for
investing in us!**

**Your donation is an investment in the
future of Sonoma County families**



"Being in AVANCE has taught us that it is normal for our older son, at his age, to have temper tantrums. We have learned to talk to him and ask him questions. Now we always try to stay calm, listen, and give him love and comfort."

MISSION

Community Action Partnership of Sonoma County partners with the community to empower low income families through community engagement, health and wellness, education and financial stability strategies.

BOARD OF DIRECTORS

Jamie Padilla
President

Shaun Moran
Vice President

Arlie Haig
Secretary

Joey Hejnowicz
Treasurer

Allison Spitzer

Austyn Hall

Betzy Chavez

Denise Ragozzino

Francisco Cano

Jeremy Johnson

Johnathan Nolen

Tim Sergent

Todd Sheffield

VISION

Community Action Partnership of Sonoma County strives to eliminate poverty and invests in families through partnerships, advocacy and high impact programs.

A WHOLE New Approach



Dear Friend,

Lindsey came by our offices to say good bye a few weeks ago. We were thrilled to share her excitement as she headed off to UC Santa Barbara. You see, Lindsey is a first generation student, a former participant in our programs, and Lindsey's mom, Esmeralda, is one of our team members at CAP Sonoma.



Esmeralda's journey as part of our agency began over ten years ago, when she, like many parents searching for ways to give her daughters a better life, enrolled in *Pasitos*, our school readiness program for Spanish speaking parents. Esmeralda did not know that in the process, she would find a career opportunity as a *Home Visitor* in *AVANCE*, our early childhood development and parent education program.

We need your support today to continue to positively impact the lives of many families, so that just like Esmeralda they are able to gain parenting, employment, and life skills to able to access the opportunity to thrive.

The hope and pride in Esmeralda's eyes, coupled with the excitement and courage of Lindsey, are deeply heartening and are important drivers for my vision for CAP Sonoma. **We must end the cycle of generational poverty in Sonoma County, and I know we can.**

Help us continue to work with both parents and children together to create a legacy of increased opportunities that passes from one generation to the next. We must take a Whole Family Approach. This is what we are doing at CAP Sonoma in the areas of early childhood education, community engagement, financial stability, health and wellness, and disaster relief.

We need the support of community members like you to continue to make a difference. **Your contribution today will support our efforts to fully implement programs that are encompassing of the entire family unit.** Help us end generational poverty. A remit envelope is enclosed for your convenience. You may also make your donation on our website, www.capsonoma.org.

I look forward to working together and utilizing your investment to work toward a more prosperous Sonoma County for all!

With gratitude,

Susan Cooper

Dr. Susan Cooper
Executive Director



Help Us Help Sonoma County Families



Our Head Start and Early Head Start are the longest running federal programs designed to help break the cycle of poverty, providing preschool children of low-income families with a comprehensive program to meet their emotional, social, health, nutritional, and psychological needs.

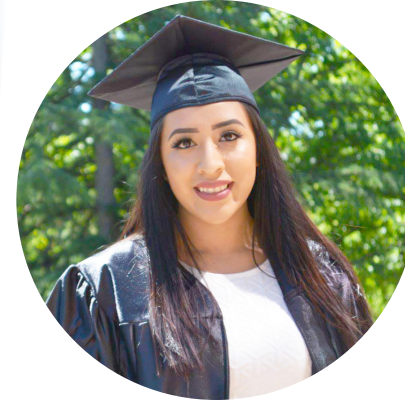
We meet families where they are by embedding our programs within communities and schools. We are growing and evolving our services and resources to include the **WHOLE Family**.

Head Start and Early Head Start, 25 classes at 15 sites in 6 cities throughout Sonoma County for low income children 0 - 5.

Our **School Readiness Programs, AVANCE** and **Pasitos** serve over 500 children and parents throughout Sonoma County.

Our **Dental Programs** provide education and screenings for 5,000 children a year and their parents at Sonoma County schools, at Sonoma County Women's, Infants and Children Centers and through our annual Give Kids A Smile event.

Our **WHOLE Family Approach** pilot program and family resource center, **Via Esperanza** served over 150 families in the last year. We need your support to continue to grow our capacity to meet the growing demand and diversity of needs.



"I began volunteering with Community Action Partnership of Sonoma County when I was 14 years old, and from that very moment, I felt that I was a part of something bigger. I began to act with that same regard in school and have since excelled in both my professional and academic development. I am now not only a full time student at Sonoma State University, a member of the Sonoma County Health Action Council; I am also a leader within our agency as the Healthy Communities Programs' Data Specialist."



Empowering Communities

Our **Community Engagement Programs** aim to build a network of leaders in disenfranchised communities through leadership development in the areas of policy, advocacy, and personal empowerment.

This past year, in partnership with our resident leaders in the **Roseland Community Building Initiative, Padres Unidos** and **DIG Youth Development program**, we have engaged over 900 community members in strengthening their neighborhoods!

Your support will help us expand our community engagement efforts.

After the fires devastated our community last year, we knew that our community needed us. We worked with partners and supporters to build our **Disaster Relief Program** informed by the needs of our community.

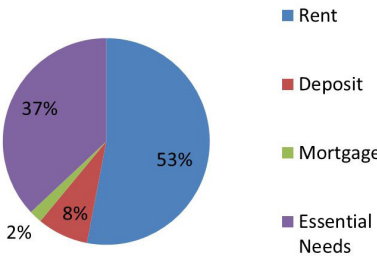
We have served over 494 individuals.

Disbursed over \$700,000

49% considered Extremely Low Income.

Resource Center
303 Walk - Ins (Jul - Oct 2018)

Disaster Relief
Disbursed Funds
October 2017-September 2018



Through generous financial support, this year we were able to lead the efforts in opening, hosting, coordinating and staffing the R.O.C. (Rebuilding Our Community) Sonoma County Collaborative's resource center for fire survivors.

Rethinking Leadership

We are focusing our efforts on growing a diverse leadership within our agency. We are increasing our investment in professional and leadership development in order to further strengthen our team of over 200 employees to continue to serve over 10,000 individuals every year.

We know that our community is committed to us. Our volunteers collectively invested over 75,470 hours this past year.

We need your support to continue our work in the year to come.

Help us help the families of Sonoma County.



"I am forever grateful to my case managers at Community Action Partnership for their relentless support and kindness in locating housing and resources for me."

A Word From Our CFO Rupinder Malhi, CPA

With your support we are able to continue to leverage our federal, state and local funding streams to allow us to continue to provide top of the line services and resources for our Sonoma County communities.

Here are our funding expenditures' details for the 2017 - 2018 fiscal year.

